

Integration with smart building management systems...

SPRVSR+ Plug-In Integration with CathexisVision

Software that offers solutions to the need to manage different systems from a single center has become much more preferable as a result of technological partnerships. Mavili Electronics, which has been developing products and services in the field of fire and gas detection systems since 1987, provides solutions to this need by producing products that are included in intelligent building technology and can work integrated.

Being the solution partner of Cathexis, which produces high-quality solutions in the field of VMS, has made a significant difference in ensuring the safety of life and property against fires that may occur in places where smart building technology is used.

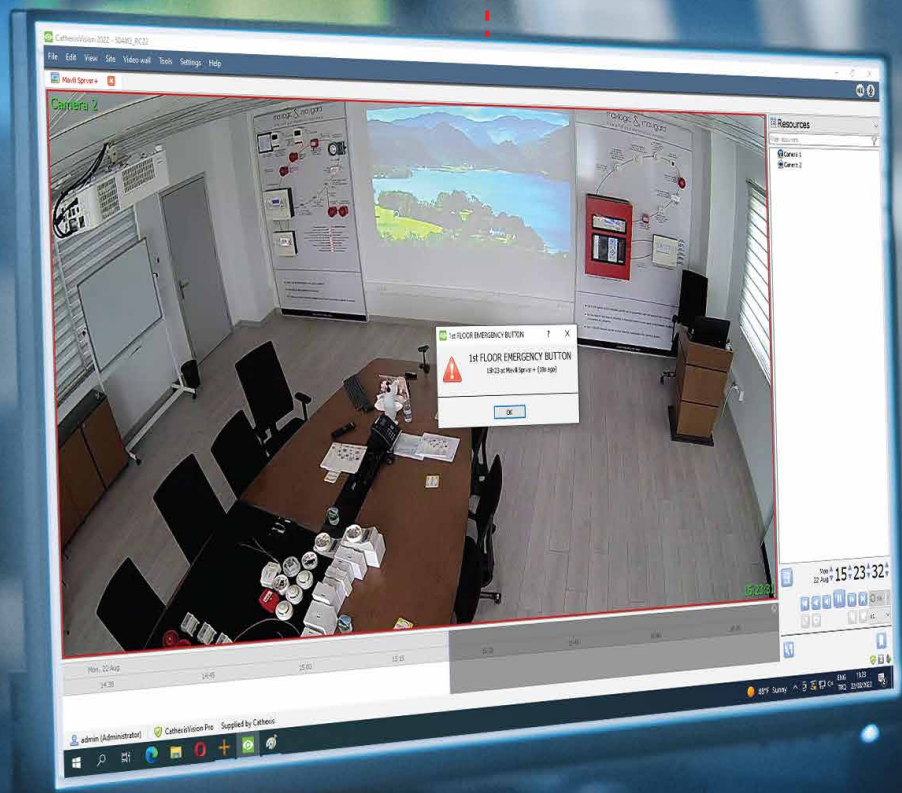
The Maxlogic SPRVSR+ Plug-In software belonging to Mavili is integrated into the Cathexisvision software belonging to Cathexis.. With the help of SPRVSR+ Plug-In, the status of the camera-device-defined area can be monitored via CathexisVision and controlled via plug-in.

- ▶ Maxlogic & Mavigard brand fire detection and alarm devices can be displayed graphically on the floor plan
- ▶ Access to detailed map and device information of the location
- ▶ Ability to switch between maps manually as well as automatically
- ▶ In case of fire; firstly, information about the fire can be displayed on the screen in the form of pop-ups
- ▶ Live viewing of the location where the fire information is received from the cameras matched with the device from which the fire alarm came
- ▶ Realization of all interventions that can be made with the fire control panel
- ▶ E-mail and SMS notification

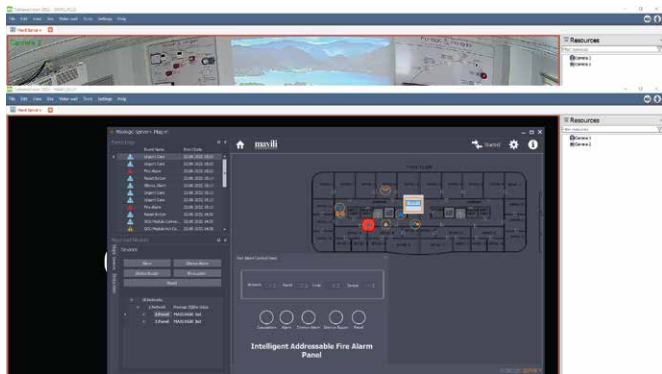
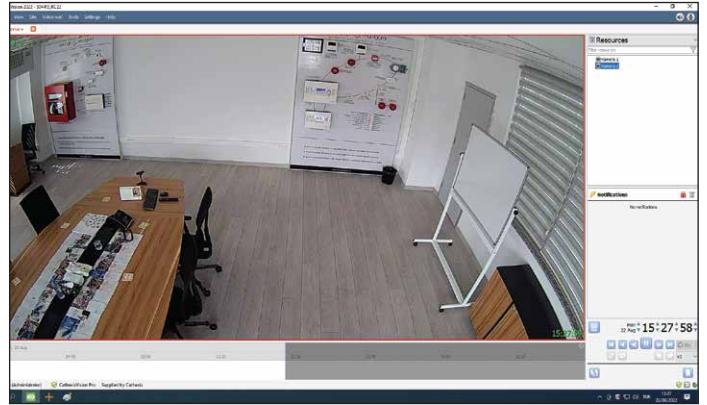


maxlogic & mavigard
fire and gas detection systems

In case of a fire alarm, a pop-up warning is received and the location status can be observed from the camera that matches the device. In addition, the fire notification is displayed in the notification area.



Live camera view can be obtained and recordings can be taken from cameras paired with Maxlogic & Mavigard brand fire detection and alarm devices.



The SPRVSR+ Plug-In is operated to display the point where the fire alarm came from on the map. With the help of SPRVSR+ software, which enables the transition between maps, the system can be intervened in two different ways. The first one is performed via the **Alarm, Silence Alarm, Silence Buzzer, Reset** buttons in the devices menu on the left. The second one is remote control can be performed by accessing the interface of the fire control panel located on the map.

As a result of the cooperation of Mavili and **Cathexis**, special VMS for smart buildings can be realized with CathexisVision, in which different systems are integrated.



SOFTWARE MODELS

Product Code	Description
ML-1634.1	Maxlogic SPRVSR+ Graphic Monitoring and Control Android Software using cost, 1 user
ML-1634.5	Maxlogic SPRVSR+ Graphic Monitoring and Control Android Software using cost, 5 user
ML-1634.10	Maxlogic SPRVSR+ Graphic Monitoring and Control Android Software using cost, 10 user
ML-1635.1	Maxlogic SPRVSR+ Graphic Monitoring and Control IOS Software using cost, 1 user
ML-1635.5	Maxlogic SPRVSR+ Graphic Monitoring and Control IOS Software using cost, 5 user
ML-1635.10	Maxlogic SPRVSR+ Graphic Monitoring and Control IOS Software using cost, 10 user
ML-1636.12	Maxlogic SPRVSR+ Plug-In Graphical Monitoring Software Using cost, Cathexis Integration

DONGLE MODELS

Product Code	Description
ML-1661.1	Maxlogic Sprvsr+ Master USB Dongle using cost
ML-1661.2	Maxlogic Sprvsr+ Slave USB Dongle using cost
ML-1661.3.12	Maxlogic SPRVSR+ Plug-In USB Dongle using cost, Cathexis Authorization

